



---

---

# **SCHOLARSHIPS & FINANCIAL ASSISTANCE**

---

---

## **AY 2020/2021**

**THE FUTURE IS YOURS TO **SHAPE****

# CONTENTS

- 1** The Future is Yours to Shape
- 2** MOE Tuition Grant (TG) Scheme
- 3** SIT Scholarship
- 12** External Scholarships
- 12** Donor-Supported Bond-Free Scholarships
- 13** Scholarships Administered by MOE-Appointed Secretariat Office
- 13** Financial Assistance Schemes at a Glance
- 14** Financial Assistance Recipients
- 16** Loan Schemes
- 18** Other Assistance Schemes
- 19** Bursaries and Study Grants
- 20** Donor-Supported Bursaries and Study Grants
- 22** Scholarships and Financial Assistance Application Timeline
- 24** Notes

# THE FUTURE IS YOURS TO SHAPE



At SIT, we recognise and nurture our students through the wide array of scholarships made available by SIT and our extensive network of partners. Beyond academic merit, our scholars at SIT contribute actively to student life and embody the **SIT-DNA — 'Thinking Tinkers', who are 'Able to Learn, Unlearn and Relearn', while being 'Catalysts for Transformation' and staying 'Grounded in the Community'.**

At the same time, SIT is committed to providing students access to an excellent education without letting any financial challenges get in the way. Through the Financial Assistance schemes, we aim to empower you to take charge of your education journey.

# MOE TUITION GRANT

## (TG SCHEME)

Tuition fees for undergraduate programmes at SIT are highly subsidised by the Singapore Government via the MOE TG Scheme.

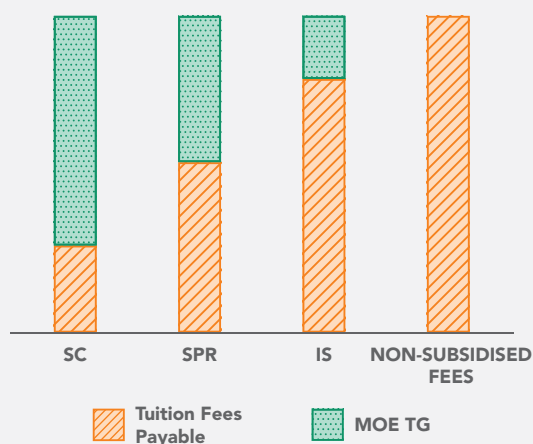
Singapore Citizens (SC), Singapore Permanent Residents (SPR) and International Students (IS) enrolled in full-time undergraduate degree programmes are eligible to receive it.

TG subsidies are not repayable but SPR and IS are required to sign a TG agreement and work for a Singapore-based company for a period of three years upon graduation. SPR and IS who do not sign the TG agreement will pay non-subsidised fees.

Students who have received TG for studies in degree programmes at **NUS, NTU, SMU, SUTD, SIT, SUSS, LASALLE or NAFA**, will be eligible for TG up to the total credits required for graduation at SIT, less the percentage of semesters or trimesters of TG received at your previous university.

If you have fully utilised your TG for degree programmes and were conferred degree qualifications, you will have to pay non-subsidised fees for the entire duration of your new programme.

## TUITION FEES



Part-time degree graduates from SUSS (formerly known as UniSIM) who had partially received the Tuition Subsidy to complete their first part-time undergraduate degree will be eligible for pro-rated TG as long as they have not received the Ministry of Education (MOE)'s subsidy at a higher qualification level (e.g. postgraduate diploma and master's programme). If you have graduated from a part-time undergraduate degree programme awarded by then-SIM University and was enrolled in the degree programme between 2001 to 2008, please contact us at [Registrar@SingaporeTech.edu.sg](mailto:Registrar@SingaporeTech.edu.sg) for more details on tuition fees.

For more information on the MOE TG Scheme and tuition fees, please visit [SingaporeTech.edu.sg](https://SingaporeTech.edu.sg).



# SIT SCHOLARSHIP

As the flagship scholarship of SIT, a significant amount of resource is invested in the SIT Scholarship to cultivate a group of future leaders. We look for qualities such as commitment, integrity, passion, leadership and a strong potential to embody the SIT-DNA. Additionally, we look for outstanding individuals with the potential to be distinguished SITizens to help us shape the student culture at SIT.



# CRITERIA

## SIT SCHOLARSHIP

## SIT MID-TERM SCHOLARSHIP



### COVERAGE

- ✓ Subsidised tuition fees based on the prevailing cost of the degree programme for SC
- ✓ Annual miscellaneous fees



### UNDERGRADUATE PROGRAMME

- ✓ All Programmes



### ELIGIBILITY

#### KEY

- SC = Singapore Citizens
- SPR = Singapore Permanent Residents
- OU = Overseas University

- ✓ SC or SPR
- ✓ Outstanding academic results
- ✓ Strong leadership qualities
- ✓ Good CCA record

- ✓ SC or SPR
- ✓ Outstanding academic results
- ✓ Strong leadership qualities
- ✓ Good CCA record
- ✓ For SIT or joint degree programmes:

Completed 60 credits

- ✓ For OU degree programmes:

Entering final year of degree programme

# APPLICATION PROCESS

**SIT Application Portal**  
<https://Admission.SingaporeTech.edu.sg>

**Applicant**  
Submit your Admissions application.

**Returning NSMen**  
Confirm your acceptance by the stipulated deadline.

**Submit your Financial Aid application.**  
You should apply for the SIT Scholarship in the same year you are seeking to matriculate.  
Application Period:  
2 January to 31 March

Shortlisted applicants for Admissions will be assessed through interviews. For specific degree programmes, you may have to submit portfolios, and/or be assessed through written or technical test.

Check your SIT Scholarship application outcome. If you are successful, accept our offer!



Check your Admissions application outcome.

Shortlisted candidates for the SIT Scholarship will be assessed through interviews.

If you are successful for Admissions, accept our offer!



SIT Scholarship



Admissions

# SIT SCHOLARS

Our SIT Scholars are passionate individuals — each with a unique potential to help build the SIT identity and be our ambassadors in the community.



**Arulmalar D/O Arulchandran**

**Year One**

**Food Technology**

Having embarked on her Polytechnic studies after her A-Levels, Arulmalar found that she thrived in the hands-on learning environment that her diploma offered. She believes that SIT's applied learning pedagogy will similarly allow her to hone her skills while being a catalyst for transformation in the workforce of tomorrow.



**Masaoy Rialyn Fae Lagui**

**Year One**

**Occupational Therapy**

Having the option to pursue her studies overseas, Fae chose SIT in order to give back to the community by playing a part in shaping Singapore's healthcare landscape. The applied learning pedagogy at SIT suits her learning style. She appreciates a curriculum that is highly relevant and recognised by industry.



## Joan Charlotte Tng

Year One

Hospitality Business

Joan strongly believes in servant leadership and is particularly passionate in bringing about positive change to marginalised communities. Together with her peers, she founded a social enterprise startup in the Philippines that provides job opportunities to help women break the cycle of poverty. Joan hopes to inspire her peers to take proactive steps to empower and improve the lives of those around them.



## Low Qing En

Year Three

Information and  
Communications Technology  
(Software Engineering)

As an SIT Scholar, Qing En believes that education extends beyond academics. Besides being a student leader in Taekwondo, Qing En is also active in overseas community service projects and hopes to inspire his peers to step out of their comfort zones and contribute back to the community.



## Muhammad Syahmi Bin Sahri

Year One

Civil Engineering

Being the first in his family to enter university, Syahmi aspires to sharpen his knowledge at SIT before entering the industry. He seizes opportunities to develop himself holistically, stepping into leadership roles when the need arises, but remains grounded in his pursuits. Syahmi believes that contributions are not quantified by the work but by the positive impact made to lives.

# GRADUATED SIT SCHOLARS



Scan the QR code  
to find out more.



## **Cheng Shuet Fong**

**Graduate (2013)**

**Occupational Therapy**

**Occupational Therapist**

**Abilities Beyond Limitations and Expectations: ABLE**

**Council member of Singapore Association of  
Occupational Therapists (SAOT)**

"The SIT Scholarship has enabled me to complete my education for professional conversion from IT to Occupational Therapy smoothly.

I hope to pay it forward by contributing my time and experiences to the allied health community."



## **Goh Jun De**

**Graduate (2018)**

**Accountancy**

**Regional Analyst**

**Allianz**

"The Scholar Engagement Programme opened doors to new experiences and opportunities that allowed me to hone my leadership skills.

SIT may be a young university, but I think as SITizens, we are ambitious, and we are ready to show what we can achieve."



## **Ong Por Yee**

**Graduate (2017)**  
**Information and Communications Technology**  
**(Software Engineering)**

**Software Engineer**  
**DBS Bank**

"SIT's applied learning pedagogy helped me adapt and transit to the workforce smoothly.

The SIT Scholarship instilled in me the importance of lifelong learning to stay relevant, and to always go the extra mile to deliver results."



## **Tan Li Jun**

**Graduate (2018)**  
**Mechatronics**

**Planning Engineer**  
**Airbus Services Asia Pacific Pte Ltd**

"As an SIT Scholar, I was able to acquire both technical knowledge, as well as soft skills to pursue my aspirations as an Engineer.

The Scholar Engagement Programme provided me the means to achieve my goals, as well as developed me into a resilient individual."



## **P Mukkesh Kumar**

**Graduate (2015)**  
**Chemical Engineering**

**Data Programming Lead**  
**Agency for Science, Technology and Research**  
**(A\*STAR)**

"The SIT Scholarship cultivated various leadership traits in me, such as to lead with compassion, and to genuinely care for the well-being of people around me in and outside of work.

Someday, my dream is to return to SIT as a professor and play a part in shaping the future leaders of Singapore."



# SIT SCHOLAR ENGAGEMENT



As Singapore's university of applied learning, SIT looks to our scholars as proactive agents of innovation and transformation. Through programmes such as the induction camp, dialogue sessions and specially customised workshops, we aim to create a community of leaders of tomorrow.



Scan the QR code to find out more.



## SIT SCHOLARS' TEA SESSION



Scan the QR code to find out more.



Scan the QR code to find out more.



## SIT SCHOLARS' CAMP



## SIT SCHOLARSHIP AWARDS AND APPRECIATION CEREMONY



Scan the QR code to find out more.





# EXTERNAL SCHOLARSHIPS

SIT has developed a close symbiotic relationship with the industry. Together with our industry partners, government agencies and organisations, SIT has been bringing opportunities to deserving undergraduates through scholarships and sponsorships.

Our industry partners also benefit from our world-class tertiary education by sending their employees to SIT to upgrade their skills and gain new knowledge through our degree programmes.



**1 in 7** students

from AY2019 intake is on an industry scholarship.

## DONOR-SUPPORTED BOND-FREE SCHOLARSHIPS

The following bond-free scholarships have been established at SIT, thanks to gifts from donors who wish to encourage our students to strive for the highest academic excellence:

- » Baker Tilly Scholarship
- » BR Metals Scholarship
- » Choo Chiau Beng Overseas Immersion Programme Scholarship
- » EnGro Scholarship
- » EPS Computer Systems Scholarship
- » Feng Ming Scholarship
- » Ho Bee Scholarship
- » iSparkle Scholarship
- » John Abraham Rapid Physiocare Scholarship
- » Kewalram Chanrai Group Scholarship
- » KKH Scholarship
- » Lim Doa Hin Scholarship
- » Lim Siah Mong Scholarship
- » Mr & Mrs Ko Seng Gie Scholarship
- » Naterra Resources International Scholarship
- » Nexia TS Public Accounting Corporation Financial Scholarship
- » Octava Foundation Scholarship
- » ON Semiconductor Scholarship
- » Peter Lim Scholarship
- » Prudential Scholarship
- » Rotary Club of Bugis Junction Scholarship
- » Rotary Club of Tanglin & Tong Kok Chiang Scholarship
- » RSM Singapore Financial Scholarship
- » SBF Foundation – SIT Scholarship
- » SCCCCF Scholarship
- » Seagift Scholarship
- » Select Group Scholarship
- » Singapore Chemical Industry Council Financial Scholarship
- » Tan Sri (Dr) Tan Chin Tuan Scholarship
- » Teknor Apex Asia Pacific Financial Scholarship
- » The Abang Scholarship
- » The Ngee Ann Kongsi Scholarship
- » TUCSS Engineering Scholarship
- » Wilmar Scholarship

# SCHOLARSHIPS ADMINISTERED BY MOE-APPOINTED SECRETARIAT OFFICE



For the most up-to-date information on scholarships, please visit [SingaporeTech.edu.sg](https://singaporetech.edu.sg).

## EDUCATION EXPENSES



Tuition Fees



Living Expenses



Enrichment Programmes

## FINANCIAL ASSISTANCE SCHEMES AT A GLANCE

### Tuition Fees

- » MOE Tuition Grant
- » MENDAKI Tertiary Tuition Fee Subsidy
- » Post-Secondary Education Account
- » CPF Education Scheme
- » Tuition Fee Loan
- » SIT Study Loan
- » Donor-Supported Bursaries

### Living Allowance

- » SIT Study Loan Living Allowance
- » Higher Education Community Bursary
- » Higher Education Bursary
- » SIT Bursary
- » Donor-Supported Bursaries

### Miscellaneous Support

- » Laptop Support Scheme
- » Overseas Student Programme Loan
- » Emergency Funds and Grants

# FINANCIAL ASSISTANCE RECIPIENTS

At SIT, we understand that managing both education expenses and your academics at the same time can prove to be challenging. With the support of the wide range of financial assistance available at SIT, our students, some of whom are First in Family\* to attend university are able to achieve their educational goals and uplift their families upon graduation.



## Zulfadli Bin Johari

Year One

**Information and Communications Technology (Information Security)**

"I was concerned that my pursuit of a university education would place a further burden on my mother who was the sole breadwinner for our family of five. I strongly believe that SIT's applied learning pedagogy would prepare me for the challenges in the IT industry.

Receiving the SIT Bursary has reassured me that I will be able to pursue my education goals with the support available at SIT."



## Quek Xing Yu

Year Three

**Food Technology**

"As the second of two siblings to enter SIT, both my parents understood the importance of a tertiary education and the opportunities that a university education would present for our future. My brother was in his second year of study in Hospitality Business as I entered my first year of university and we had to use our life savings to manage my parents' chemotherapy treatments, leaving little for our education expenses. As my savings dwindled, I received financial support through the Public Bursary and donated awards. This allowed us to care for the family and I was able to focus in school. This year, I have managed to secure a Donor-Supported Scholarship! I hope to be able to give back to society in the future by helping others in need of aid too."

\*First in Family refers to students whose parents did not have the opportunity to attend university.



## **Ayu Wandira Bte Rahmat**

**Year Two**

**Diagnostic Radiography**

"My own experience with having an X-ray taken sparked my interest in Diagnostic Radiography, and I felt that this was a profession in which I could contribute to the healthcare in Singapore. Coming from a large family, we lived prudently, and I did not have much financial resources to manage my daily school expenses such as school supplies and meals. With the bursaries received, I no longer have to depend on my parents for an allowance and they are able to allocate the family's financial resources to my younger siblings instead."

## **Lim Zhen Qiang, Andy**

**Year Two**

**Accountancy**

"After completing my National Service, I was unsure if I was able to manage both my living and education expenses by working part-time. Through the financial assistance available at SIT, I can reduce my working hours and focus on my studies instead."

## **Joyee Ong Wen Jing**

**Year One**

**Systems Engineering (ElectroMechanical Systems)**

"I am the first in family to attend university. I was drawn to SIT as its programmes are designed in consultation with industry, making its graduates highly employable and work-ready. The Tuition Fee Loan and bursaries have helped me to manage my tuition fee and other expenses and I am able to fully focus on my studies."

# LOAN SCHEMES

## TUITION FEE LOAN (TFL)

## SIT STUDY LOAN (SIT SL)

### ELIGIBILITY



- ✓ SC
- ✓ SPR
- ✓ IS

- ✓ SC/SPR with a PCI of no more than S\$2,700
- ✓ IS with a PCI of no more than S\$1,200

### LOAN QUANTUM



- ✓ Up to 90% of subsidised fees payable by SC

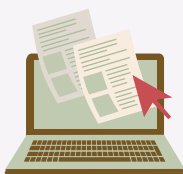
- ✓ Up to 10% of subsidised tuition fees payable by SC
- ✓ Living Allowance option of S\$3,600 per annum

### GUARANTOR REQUIREMENT



- ✓ Between 21 to 60 years of age
- ✓ Must not be an undischarged bankrupt
- ✓ No income qualification required
- ✓ Must not have guaranteed more than 2 student loans
- ✓ Nationality:
  - ✓ SC guarantor for SC applicant
  - ✓ SC/SPR guarantor for SPR applicant
  - ✓ SC/SPR/Foreigner for IS applicant

### HOW TO APPLY



- ✓ Apply online via IN4SIT\* and generate the Application Form to submit to a DBS branch by the stipulated deadline

- ✓ Apply online via IN4SIT\* with uploaded supporting documents for income eligibility assessment by the stipulated deadline
- ✓ Upon approval, student is to present the Letter of Approval and Loan Agreement Form at a DBS branch

### KEY:

SC = Singapore Citizens  
IS = International Students

SPR = Singapore Permanent Residents  
PCI = Per Capita Income

### NOTE

1. IS must be in receipt of the MOE TG in order to apply for the TFL and SIT SL.
2. For use of SIT SL for payment of tuition fees, applicants must have also applied for the TFL.

\* IN4SIT refers to SIT's student portal.

For more information on loan schemes please refer to [SingaporeTech.edu.sg](https://www.singaporetech.edu.sg).



## CPF EDUCATION SCHEME (CPFES)

## OVERSEAS STUDENT PROGRAMME LOAN (OSP)

- ✓ SC/SPR/IS who are in receipt of the MOE TG

- ✓ Up to 100% of subsidised tuition fees payable by undergraduate students
- ✓ CPF member may only use up to 40% of accumulated savings in the ordinary account, excluding amounts withdrawn for housing

- ✓ SC/SPR: No guarantor requirement. However, the CPF Board reserves the right to require a student to furnish a guarantor acceptable to the Board when it is deemed necessary
- ✓ IS: Have to furnish details of a guarantor upon application

- ✓ SC/SPR: Login using SingPass via CPF Board website
- ✓ IS: Hardcopy application to be submitted to SIT

SC and SPR students going for their Overseas Immersion Programme (OIP) or Overseas Exposure Programme (OEP). Each student is entitled to receive the OSP Loan only once during the course of study and must not concurrently hold other loans or aid that covers the full cost of the OIP/OEP.

More details will be provided at the pre-trip briefing.



A combination of loan schemes can

**COVER UP TO  
100%**

of subsidised tuition fees payable.

### EXAMPLES

**90%**  
TUITION FEE LOAN

SIT STUDY LOAN

**10%**

**50%**  
CPF EDUCATION SCHEME

TUITION FEE LOAN

**50%**



**2 in 5** students

paid for their tuition fees via a loan scheme.

# OTHER ASSISTANCE SCHEMES

## MENDAKI TERTIARY TUITION FEE SUBSIDY (TTFS)

## POST-SECONDARY EDUCATION ACCOUNT (PSEA)

### ELIGIBILITY



- ✓ SC (Malay undergraduates only)

- ✓ SC

### LOAN QUANTUM



- ✓ 50% to 100% subsidy of subsidised tuition fees; dependent on calculated PCI

- ✓ Quantum dependent on funds available in PSEA account

### HOW TO APPLY



- ✓ Submit an online application through the MENDAKI website

- ✓ Download Standing Order or Ad Hoc Withdrawal Form via the SIT website



SC who have completed their full-time National Service will receive a

## TOP-UP IN THEIR PSEA.



## LAPTOP SUPPORT SCHEME

SIT students who are unable to own a laptop for educational purposes due to financial difficulties may approach the Student Life Division. Applications are approved subject to fulfilment of eligibility criteria and availability of equipment.

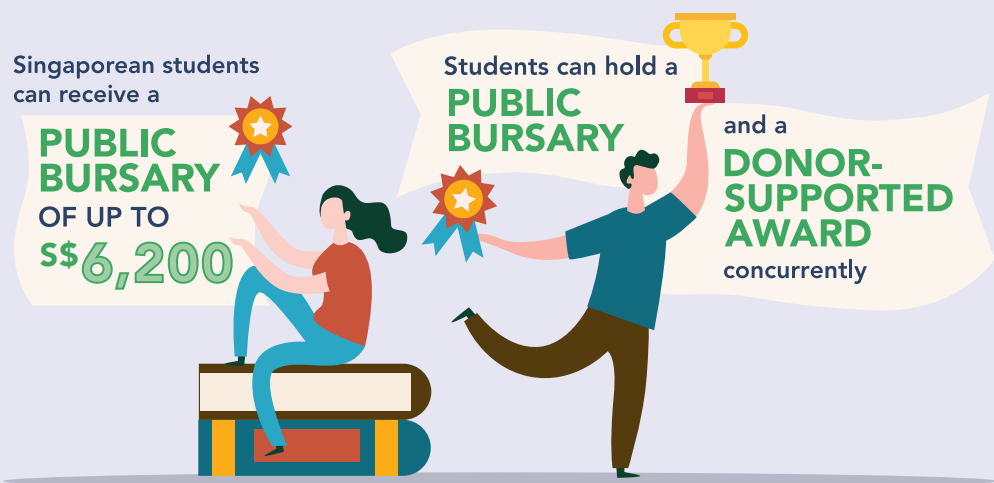
**KEY:** SC = Singapore Citizens

PCI = Per Capita Income

# BURSARIES AND STUDY GRANTS

	HIGHER EDUCATION COMMUNITY BURSARY	HIGHER EDUCATION BURSARY	DONOR-SUPPORTED BURSARY	SIT BURSARY
USAGE	<div><div></div><div>All education expenses including tuition fees, course materials, overseas educational trips, and other study-related expenses</div></div>		<div><div></div><div>Various education expenses e.g. tuition fees, living allowance, overseas educational trips</div></div>	
ELIGIBILITY	<div><div></div><div>SC</div></div> <div><div></div><div>Calculated PCI no more than S\$1,000 or GHI no more than S\$4,000</div></div>	<div><div></div><div>SC</div></div> <div><div></div><div>Calculated PCI no more than S\$2,250 or GHI no more than S\$9,000</div></div>	<div><div></div><div>Residency criteria is unique to each donor-supported bursary</div></div> <div><div></div><div>Award quantum varies from S\$3,000 to S\$10,000</div></div>	
	<div><div></div><div>S\$5,000 or S\$6,200 depending on calculated PCI or GHI</div></div>	<div><div></div><div>S\$1,350 or S\$3,200 depending on calculated PCI or GHI</div></div>	<div><div></div><div>Please refer to the SIT website for a full listing of donor-supported bursaries available and their respective criteria and awarding quantum</div></div>	
HOW TO APPLY	<div><div></div><div>Apply online via IN4SIT* with uploaded supporting documents for income eligibility assessments</div></div>			

**KEY:** SC = Singapore Citizens PCI = Per Capita Income GHI = Gross Household Income  
 \*IN4SIT refers to SIT’s student portal



# DONOR-SUPPORTED BURSARIES AND STUDY GRANTS

Donor-Supported Bursaries/Study Grants	Residency Criterion	Quantum Per Academic Year (SGD)
Abwin Study Grant	SC	\$5,000
Aegis Building & Engineering Bursary	SC/SPR	\$5,000
Alfa Tech Bursary	SC/SPR	\$5,000
Apricot Capital Foundation Bursary	SC/SPR	\$5,000
Ascendas Real Estate Investment Trust ("A-REIT") Bursary	SC	\$5,000
Aviva Bursary	SC/SPR	\$5,000
Catalyst Bursary	SC/MY	\$5,000
Chan Yen Chung & Lau Khuai Soon Bursary	SC/SPR	\$5,000
Choo Chiau Beng Bursary	SC	\$5,000
Dou Yee Enterprises Bursary	SC/SPR	\$7,500
ENGIE Services Singapore Bursary	SC/SPR	\$5,000
FEINMETALL Bursary	SC	\$5,000
Geo Energy Bursary	SC/SPR	\$5,000
GIC Sparks & Smiles Award	SC	\$6,000
Goh Bee Gah Bursary	SC	\$5,000
Goh Family Bursary	SC	\$5,000
Goh Foundation Allowance	SC	\$2,000
Goh Foundation Bursary	SC	\$6,250
Hifsah Begum Study Grant	SC/MY	\$5,625
Ho Family Bursary	SC	\$5,000
Hong Leong Foundation Bursary	SC	\$5,000
HSH Study Grant	SC	\$5,000
ICH Gemini Bursary	SC	\$5,000
JCS-Echigo Study Grant	ALL	\$5,000
John Abraham Rapid Physiocare Bursary	SC/SPR	\$5,000
JSP Study Grant	ALL	\$5,000
Kee Gen Heng Bursary	SC	\$5,000
Keppel Study Grant	SC	\$5,000
Khoo Chwee Neo Foundation Bursary	ALL	\$5,000 - \$10,000
Kimly Construction Bursary	SC/SPR	\$5,000
Koufu Bursary	SC/SPR	\$5,000
Kwai Fong & Raymond Goh Study Grant	SC	\$5,000
Kwan Im Thong Hood Cho Temple Bursary	SC	\$5,000
Lee Foundation Bursary	SC/SPR	\$6,220
Lee Foundation Emergency Grant	SC/SPR	\$2,000 - \$5,000
Li Ah Ngor Bursary	ALL	\$5,000
Lien Shih Sheng Bursary	SC/SPR	\$5,000
Lih Ming Construction Bursary	SC/SPR	\$5,000
Lim Chew Swee Bursary	SC	\$5,000
Lim Doa Hin Study Grant	SC	\$5,000
Lim Family Bursary	SC	\$10,000
Lim Pu Leh Bursary	ALL	\$5,000
Lions Community Service Foundation Emergency Grant	ALL	\$2,000
Lo Chee Fei & Ng Choy Wah Bursary	SC	\$7,500
Lo Hock Ling Bursary	SC	\$5,000
Loo Shaw Chang & Tan Hooi Hong Bursary	SC	\$5,000
Low Ming Wah Study Grant	ALL	\$5,000
Loyang Tua Pek Kong Bursary	SC/SPR	\$5,000
L-QuBE Bursary	SC/SPR	\$5,000
M.Tech Bursary	SC/SPR	\$5,000
Mapletree Bursary	SC	\$5,000

Donor-Supported Bursaries/Study Grants	Residency Criterion	Quantum Per Academic Year (SGD)
Marina Bay Sands Bursary	SC/SPR	\$5,000
Mdm Leow Sik Kee Bursary	SC	\$6,000
MHC Asia Group — OdetheArt & Dr Ng Choon Hee Bursary	SC	\$5,000
Microcast Bursary	SC/SPR	\$5,000
Mohamed Abdul Jaleel Bursary	SC	\$5,000
Mr and Mrs Chow Wing Tak Bursary	SC/SPR	\$5,000
Net-Source Group Study Grant	SC/SPR	\$5,000
Ng Sheng Poh and Quek Siew Keow Bursary	SC	\$5,000
Ocean Tankers Bursary	SC	\$5,000
Paul Tseng Study Grant	SC/SPR	\$3,000
Pei Hwa Foundation Bursary	SC	\$5,000
Q'son Kitchen Equipment Bursary	SC/SPR	\$5,000
Rotary Club of Bugis Junction Bursary	SC/SPR	\$5,000
Rotary Club of Jurong Town Bursary	SC	\$5,000
S.S. Jhunjhnuwala - Naumi Hotel Bursary	SC/SPR	\$5,000
Samwoh Corporation Bursary	SC/SPR	\$5,000
Samwoh Corporation Global Immersion Study Grant	SC/SPR	\$5,000
SATS Foundation Bursary	SC	\$5,000
Sheng Siong Group Bursary	ALL	\$5,000
Silent Minority Bursary	SC (Malay, Indian, Eurasian descent)	\$5,000
Singapore Contractors Association Study Grant	SC/SPR	\$5,000
Singapore Leong Khay Huay Kuan Bursary	SC	\$3,000
SIT Bursary	SC/SPR	\$3,000
steel.sg Study Grant	SC	\$5,000
Super Bean Bursary	SC/SPR	\$5,000
T T J Design and Engineering Overseas Immersion Programme Grant	SC/SPR	\$4,000
T.E Engineering Bursary	ALL	\$5,000
TAK Bursary	SC	\$5,000
TE Connectivity Bursary	SC/SPR	\$5,000
Teo - Tan Family Study Grant	SC	\$5,000
Teo Sie Lee Bursary	SC	\$10,000
The Applied Materials Bursary	SC	\$5,000
The Ireland Funds (Singapore) Overseas Immersion Programme Grant	SC	\$6,000
Thomson Shin Min Foundation Bursary	SC	\$5,000
Thye Hong Study Grant	SC/MY	\$5,000
Tiong Seng Bursary	SC/SPR	\$5,000
TME Bursary	ALL	\$5,000
Tractors Singapore Bursary	SC/SPR	\$5,000
Wee Woon Kwee Bursary	SC/SPR	\$5,000
Woh Hup Bursary	SC/SPR	\$5,000
Wong Family Bursary	SC	\$5,000
Wong Kwok Leong (黄国量) Bursary	SC	\$5,000
Wong SH Bursary	SC	\$5,000
Wong Sooi Loon Bursary	SC	\$5,000
Worldwide Hotels - Choo Chong Ngen Bursary	SC	\$5,000
Wu Peihui Bursary	SC	\$6,000
X Inc Bursary	SC	\$5,000
Xiao De (孝德) Bursary	SC/MY	\$3,000
Xiao De (孝德) Emergency Fund	ALL	Up to \$5,000 available
Yangzheng Foundation Bursary	SC	\$6,250

**KEY:** SC = Singapore Citizens    SPR = Singapore Permanent Residents    MY = Malaysians  
Information is correct at time of print; for more details, please visit [SingaporeTech.edu.sg](https://www.SingaporeTech.edu.sg).



# SCHOLARSHIPS AND FINANCIAL ASSISTANCE

## APPLICATION TIMELINE

There are two application cycles per Academic Year.

Ensure you have access to [IN4SIT\\*](#) and your [SIT email account](#).

The status of your applications will be communicated via your SIT email account.

### JUNE CYCLE

#### APPLY FOR FINANCIAL ASSISTANCE SCHEMES

**PSEA Standing Order**

**Tuition Fee Loan**

**SIT Study Loan**

**Financial Aid**

(Scholarships, Bursaries and Grants)

**Application Period: 1 June to 7 July**

**MENDAKI Tertiary Tuition Fee Subsidy**

**CPF Education Scheme**

**Application Period: Refer to [SingaporeTech.edu.sg](http://SingaporeTech.edu.sg)**

**FIRST TRIMESTER'S  
TUITION FEE BILLING**

**RELEASE OF DONOR-SUPPORTED  
AWARDS APPLICATION OUTCOME**

**DISBURSEMENT OF YOUR  
AWARDED FINANCIAL AID**

**RELEASE OF PUBLIC BURSARY  
APPLICATION OUTCOME**

END  
**JUL**

END  
**AUG**

**SEP**

**OCT**

**JUN**

**RELEASE OF SIT STUDY LOAN  
APPLICATION OUTCOME**

Successful applicants to submit  
relevant forms to DBS Bank

**INTERVIEW ASSESSMENT  
FOR DONOR-SUPPORTED AWARDS**

# NOVEMBER CYCLE

## APPLY FOR FINANCIAL ASSISTANCE SCHEMES

**PSEA Standing Order**

**Financial Aid** (Scholarships, Bursaries and Grants)

Application Period: 1 to 15 November

**MENDAKI Tertiary Tuition Fee Subsidy**

**CPF Education Scheme**

**Tuition Fee Loan**

Application Period: Refer to [SingaporeTech.edu.sg](https://singaporetech.edu.sg)

SECOND TRIMESTER'S TUITION  
FEE BILLING

RELEASE OF DONOR-SUPPORTED  
AWARDS APPLICATION OUTCOME

DISBURSEMENT OF YOUR  
AWARDED FINANCIAL AID

RELEASE OF PUBLIC BURSARY  
APPLICATION OUTCOME

INTERVIEW ASSESSMENT  
FOR DONOR-SUPPORTED AWARDS

NOV

JAN

MID MID  
JAN-FEB

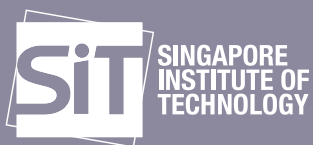
MAR

For more information, please refer to [SingaporeTech.edu.sg](https://singaporetech.edu.sg).

\*IN4SIT refers to SIT's student portal

# NOTES





► Singapore Institute of Technology

SIT@Dover, 10 Dover Drive,  
Singapore 138683

REGISTRATION NUMBER: 200917667D

**SINGAPORETECH.EDU.SG**

.....

Scholarships and Financial Assistance Hotline: 6592 1136

Scholarships and Financial Assistance E-mail: FAS@SingaporeTech.edu.sg

